

## Authorized Distributor of **SUPREMA**

Auto ID India, a Centena group company, is a one-stop solution provider of identity and security in India. Auto ID India provides individual as well as end-to-end integrated solutions for

- ▶ ID Card Issuance
- ▶ Time & Attendance
- ▶ Access Control
- ▶ Smart Card Solutions
- ▶ RFID

and other innovations that meet 21<sup>st</sup> century security requirements. The unique solutions are catered to Government, Corporate, Educational, Manufacturing, Retail and other major industries across India. The global domain expertise built over these years has made Auto ID India the entrusted identification and security solutions partner in the region.


### **A - ID SYSTEMS INDIA PVT. LTD CORPORATE OFFICE**



KRM Tower, No.1, 8th Floor,  
Harrington Road, Chetpet,  
Chennai – 600031.  
TN, India.

### **WE ARE IN**

Andaman, Bengaluru, Chennai, Cochin, Delhi, Goa, Hyderabad, Jaipur, Kolkata, Mumbai, Patna, Pune, Visakhapatnam

Pan India no:  
 **+91 7208098666**

Write to us:  
 **info.autoid@centena.com**

# FaceLite

Compact Face Recognition Terminal



Suprema FaceLite is the most compact face recognition terminal providing loads of the world's best features. Powered by Suprema's latest innovation in facial biometrics, FaceLite offers unrivaled matching speed, accuracy, and level of security. With Suprema's patented optic engineering, FaceLite achieves up to 25,000 lx of operating illuminance which in turn, brings all-around confidence regardless of lighting conditions. Packed in a compact and an ergonomically-designed structure, FaceLite provides exceptional performance and usability for diverse access control and time attendance sites, large or small.

### Features



#### Ultra Performance

- Matching Speed: 1,3,000 match/sec
- Group Matching: 1:5,000 match/sec
- User Capacity: Max 30,000 users (1:1), 4,000 users (1:N)



25,000 lx

#### Highest Operating Illuminance

- Operating illuminance from 0lx to 25,000lx
- Covers complete darkness to all indoor lighting conditions



#### Enhanced Security

- IR-based Live Face Detection(LFD); Prevent spoofing by printed images and LCDs
- Face template encryption
- Secured communication with TLS 1.2



#### Multi RFID Card Reading

- LF(125kHz), HF(13.56MHz) dual-band
- Reads all card types including Mobile Card (NFC and BLE)



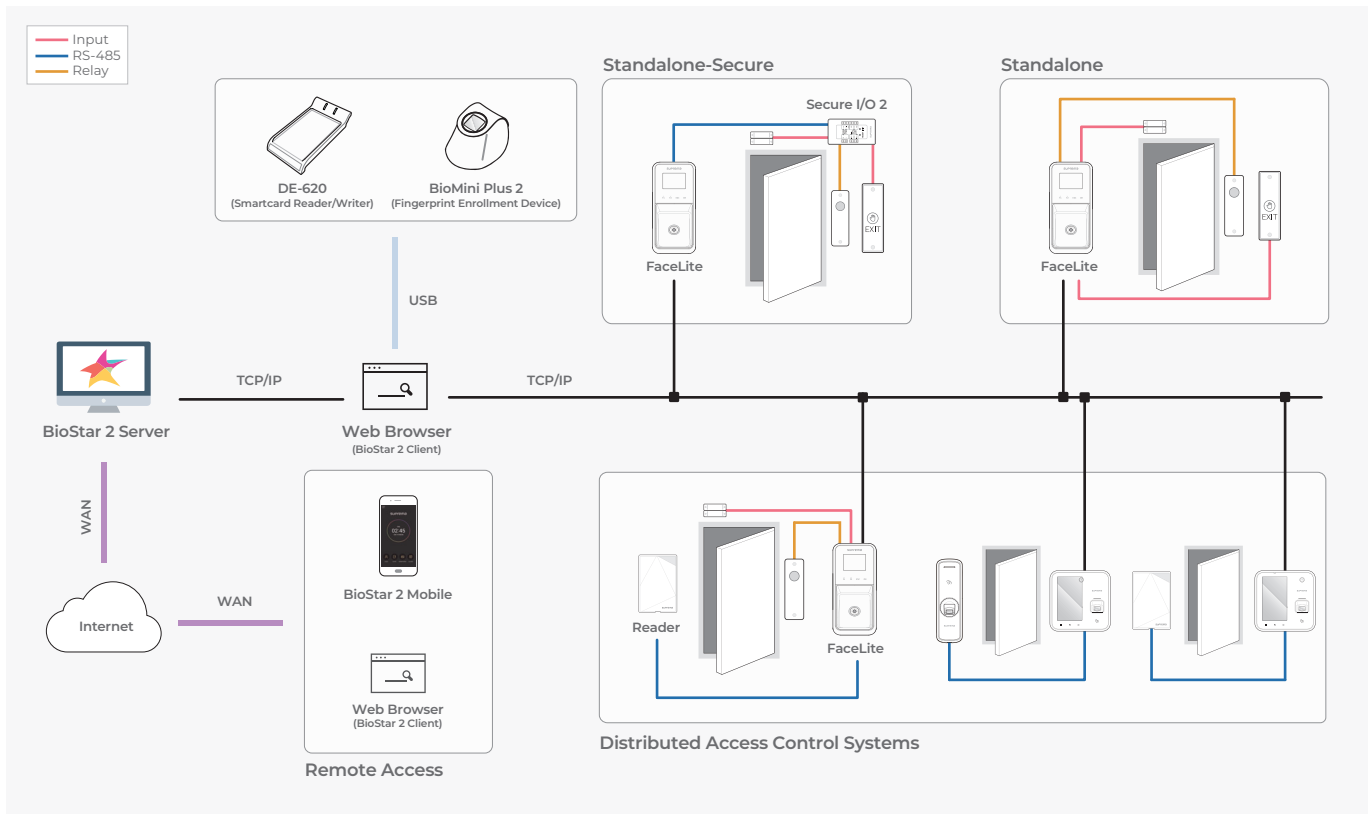
#### Ergonomics & User Convenience

- Extended height range: 145cm – 210cm
- Improved face enrollment procedure

### Specifications

Model Name	FL-DB
Biometric	Face
RF Options	125kHz EM & 13.56MHz MIFARE, MIFARE Plus, DESFire/EVI, FeliCa
Mobile Card	NFC, BLE
Max. User	30,000(1:1), 4,000(1:N)
Max. Log	5,000,000
Ethernet	10/100Mbps, auto MDI/MDI-X
RS-485	1ch Host or Slave (Selectable)
Wiegand	1ch Input or Output (Selectable)
TTL	2ch Inputs
Relay	1 Relay
Tamper	Supported
CPU	1.2GHz Quad Core
Memory	8GB Flash + 1GB RAM
Operating Temperature	-20°C ~ 50°C
Dimensions (WxHxD, mm)	80 x 170 x 76
Power	DC 24V
Certificates	CE, FCC, KC, RoHS, REACH, WEEE, BT SIG

### System Configurations



### Suprema Inc.

17F Parkview Tower, 248, Jeongjail-ro, Bundang-gu, Seongnam-si, Gyeonggi-do, 13554, Republic of Korea  
 T +82 31 783 4502 E sales\_sys@supremainc.com www.supremainc.com



For more information about Suprema's global branch offices, visit the webpage below by scanning the QR code.  
<https://www.supremainc.com/en/about/contact-us.asp>