

Authorized Distributor of **SUPREMA**

Auto ID India, a Centena group company, is a one-stop solution provider of identity and security in India. Auto ID India provides individual as well as end-to-end integrated solutions for

- ▶ ID Card Issuance
- ▶ Time & Attendance
- ▶ Access Control
- ▶ Smart Card Solutions
- ▶ RFID

and other innovations that meet 21st century security requirements. The unique solutions are catered to Government, Corporate, Educational, Manufacturing, Retail and other major industries across India. The global domain expertise built over these years has made Auto ID India the entrusted identification and security solutions partner in the region.


A - ID SYSTEMS INDIA PVT. LTD CORPORATE OFFICE



KRM Tower, No.1, 8th Floor,
Harrington Road, Chetpet,
Chennai – 600031.
TN, India.

WE ARE IN

Andaman, Bengaluru, Chennai, Cochin, Delhi, Goa, Hyderabad, Jaipur, Kolkata, Mumbai, Patna, Pune, Visakhapatnam

Pan India no:
 **+91 7208098666**

Write to us:
 **info.autoid@centena.com**

BioEntry P2

Compact IP Fingerprint Device



Suprema BioEntry P2 is a compact fingerprint access control device featuring Suprema's next generation biometric technology and security platform. BioEntry P2 provides class-leading performance and security by featuring Suprema's latest fingerprint algorithm coupled with powerful 1.0GHz CPU. Packed in a million-type sleek design, BioEntry P2 also provides added flexibility in system design by featuring multi card reading with dual-frequency RFID technology. With its selection of communication interfaces and credential options, BioEntry P2 is a perfect IP access control solution for sites large or small.

BioEntry P2

Compact IP Fingerprint Device

Features



Best-in-class Performance

- Latest Suprema algorithm
- Fast matching: Max 10,000 match/sec
- Powerful 1.0GHz CPU
- High-precision OP6 optical sensor



Enterprise-level Capacity

- Max. 10,000 users
- Max. 1,000,000 event logs



Multi RFID Card Reading

- LF(125kHz), HF(13.56MHz) dual-band
- Reads all card types including HID multiCLASS (EM/HID Prox/MIFARE/iCLASS/DESFire/FeliCa/NFC)



Versatile Interfaces

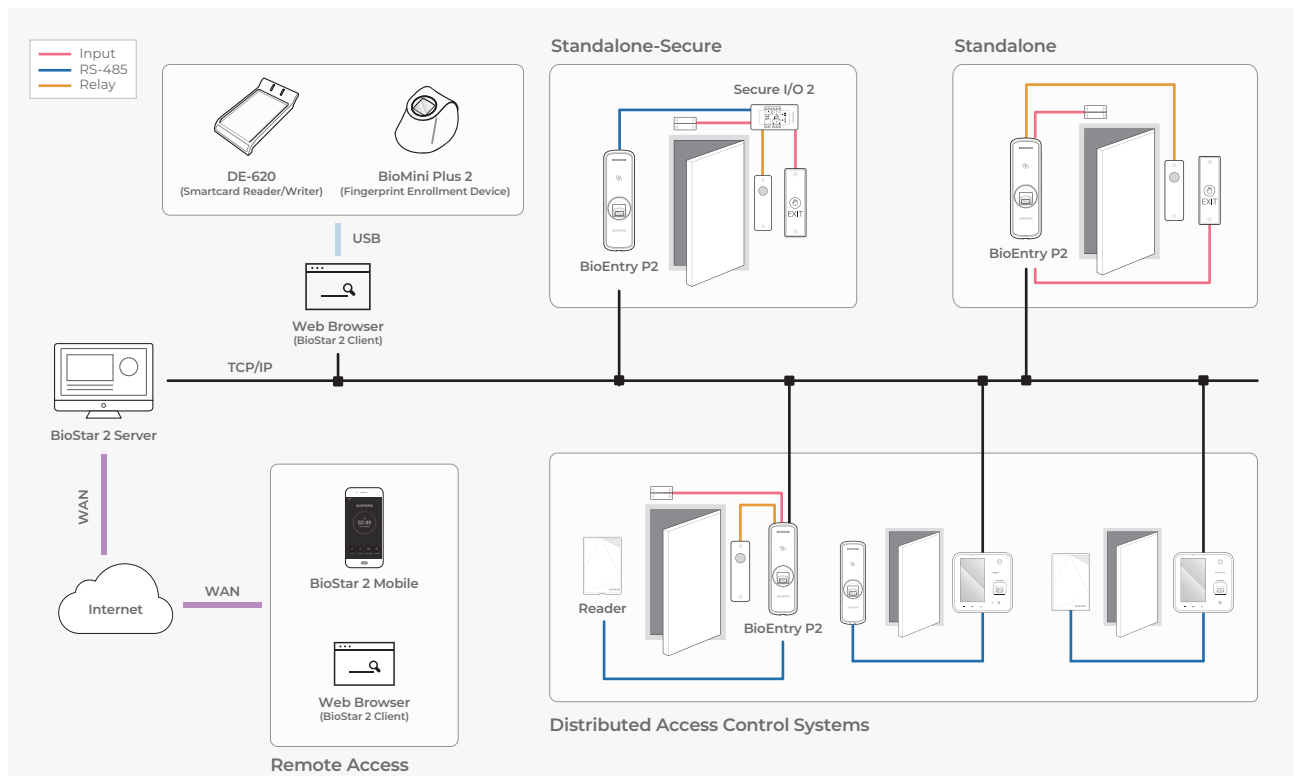
- Communication: TCP/IP, RS-485, Wiegand
- Input/output: TTL I/O, Relay

Specifications

Model Name	BEP2-OD	BEP2-OA
RF Option	125kHz EM & 13.56MHz MIFARE, MIFARE Plus, DESFire EV1/EV2*, FeliCa, NFC	125kHz EM, HID Prox & 13.56MHz MIFARE, MIFARE Plus, DESFire EV1/EV2*, FeliCa, iCLASS SE/SR/Seos, NFC
Biometric	Fingerprint	
Sensor Type	Optical Sensor (OP6)	
Template	SUPREMA / ISO 19794-2 / ANSI 378	
Extractor / Matcher	MINEX certified and compliant	
CPU	1.0 GHz	
Memory	8GB Flash + 64 MB RAM	
Max. User (1:1)	10,000 (Based on one finger enrollment per user)	
Max. User (1:N)	10,000 (Based on one finger enrollment per user)	
Max. Finger per user	10	
Max. Text Logs	1,000,000 (text)	
LED	Multi-Color	
Sound	Multi-tone Buzzer	
Ethernet	10/100 Mbps, auto MDI/MDI-X	
RS-485	1ch Host or Slave (Selectable)	
Wiegand	1ch Input or Output (Selectable)	
TTL	2ch Input	
Relay	1 Relay	
Tamper	Supported	
Power	DC 12V	
Dimensions (WxHxD,mm)	50 x 164 x 37.5	
Certificates	CE, FCC, KC, RoHS, REACH, WEEE	

* DESFire EV2 cards are supported by having backward compatibility of DESFire EV1 cards. CSN and smart card functions are compatible with BioEntry P2.

System Configurations



Suprema Inc.

17F Parkview Tower, 248, Jeongjail-ro, Bundang-gu, Seongnam-si, Gyeonggi-do, 13554, Republic of Korea
 T +82 31 783 4502 E sales_sys@supremainc.com www.supremainc.com



For more information about Suprema's global branch offices, visit the webpage below by scanning the QR code.
<https://www.supremainc.com/en/about/contact-us.asp>