

Authorized Distributor of **SUPREMA**

Auto ID India, a Centena group company, is a one-stop solution provider of identity and security in India. Auto ID India provides individual as well as end-to-end integrated solutions for

- ▶ ID Card Issuance
- ▶ Time & Attendance
- ▶ Access Control
- ▶ Smart Card Solutions
- ▶ RFID

and other innovations that meet 21st century security requirements. The unique solutions are catered to Government, Corporate, Educational, Manufacturing, Retail and other major industries across India. The global domain expertise built over these years has made Auto ID India the entrusted identification and security solutions partner in the region.


A - ID SYSTEMS INDIA PVT. LTD CORPORATE OFFICE



KRM Tower, No.1, 8th Floor,
Harrington Road, Chetpet,
Chennai – 600031.
TN, India.

WE ARE IN

Andaman, Bengaluru, Chennai, Cochin, Delhi, Goa, Hyderabad, Jaipur, Kolkata, Mumbai, Patna, Pune, Visakhapatnam

Pan India no:
 **+91 7208098666**

Write to us:
 **info.autoid@centena.com**

BioEntry W2

Outdoor IP Fingerprint Device



Suprema BioEntry W2 is a rugged fingerprint access control device featuring Suprema's next generation biometric technology and security platform. BioEntry W2 provides class-leading performance and security by featuring Suprema's latest fingerprint algorithm coupled by powerful quad-core CPU and LFD(live finger detection) technology. The device also provides added flexibility in system design by featuring multi card reading with dual-frequency RFID technology. Packed in a rugged IP67/IK09 housing with sleek metallic finish, BioEntry W2 is a perfect access control solution for tough environment and outdoor installation.

BioEntry W2

Outdoor IP Fingerprint Device

Features



Best-in-class Performance

- Latest Suprema algorithm
- 1.2GHz quad-core CPU



Improved Accuracy & Security

- New advanced Live Finger Detection(LFD) technique
- High-precision OP5 optical sensor



Expanded Capacity

- Max. 500k users/1 million text logs
- Large memory: 2GB Flash + 256 MB RAM



Rugged Structure

- IK09 impact protection
- IP67 ingress protection
- Ideal for outdoor installation



Multi RFID Card Reading

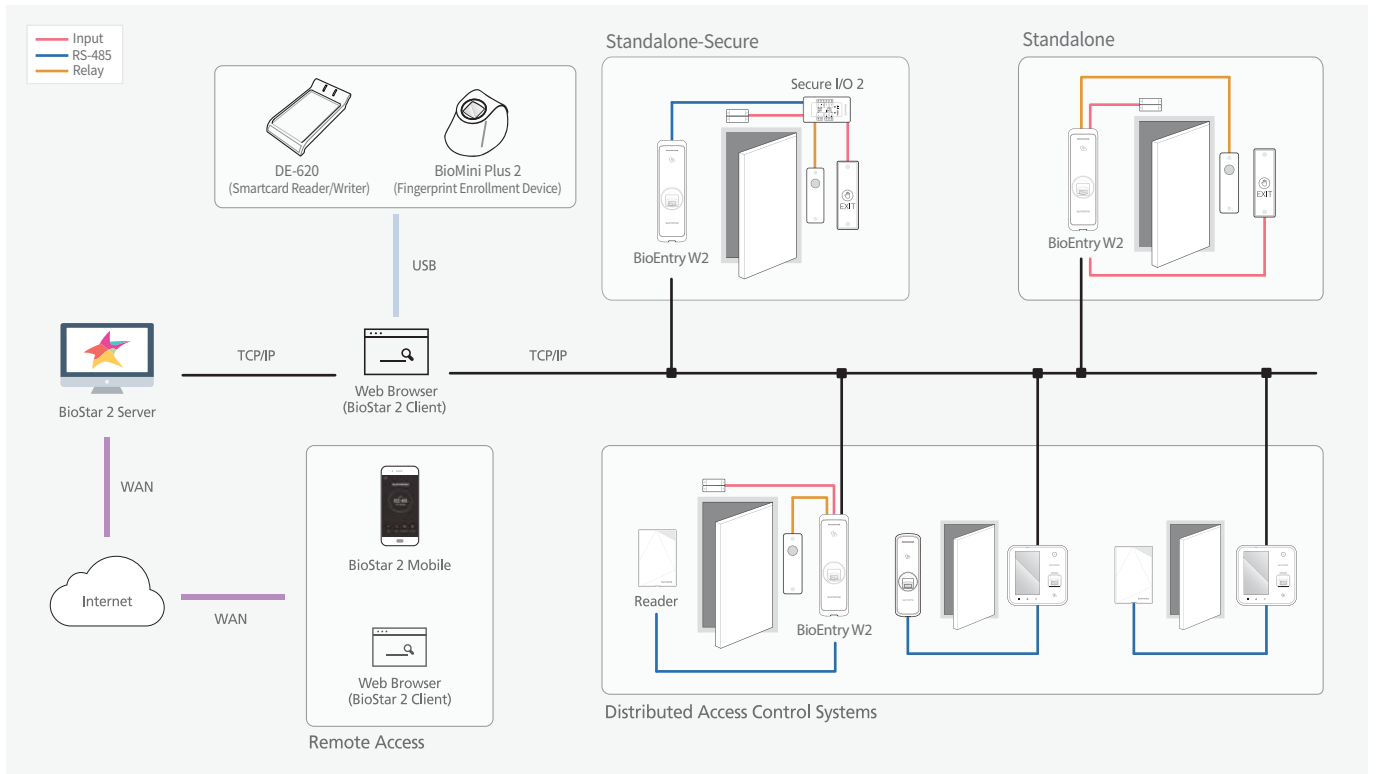
- LF(125kHz), HF(13.56MHz) dual-band
- Reads all card types that HID multiCLASS supports (EM/HID Prox/MIFARE/iCLASS/DESFire/FeliCa/NFC)

Specifications

Model Name	BEW2-OHP	BEW2-ODP	BEW2-OAP
RF Option	125 kHz HID Prox	125kHz EM & 13.56MHz MIFARE, MIFARE Plus, DESFire EV1/EV2*, FeliCa NFC	125kHz EM, HID Prox & 13.56MHz MIFARE, MIFARE Plus, DESFire EV1/EV2*, FeliCa, iCLASS SE/SR/Seos, NFC
Biometric	Fingerprint		
Sensor Type	Optical Sensor (OP5)		
Template	SUPREMA / ISO 19794-2 / ANSI 378		
Extractor / Matcher	MINEX certified and compliant		
LFD	Supported		
CPU	1.2 GHz Quad Core		
Memory	2GB Flash + 256 MB RAM		
Max. User	500,000 (1:1), 100,000(1:N)		
Max. Template	1,000,000(1:1), 200,000(1:N), [1 finger=2 templates]		
Max. Logs	1,000,000(text)		
LED	Multi-Color		
Sound	Multi-tone Buzzer		
Ethernet	10/100 Mbps, auto MDI/MDI-X		
RS-485	1ch host or slave (selectable), OSDP V2.1.6		
Wiegand	1ch input or output (selectable)		
TTL	2ch input		
Relay	1 Relay		
PoE	Supported (IEEE 802.3af compliant)		
Ingress Protection	IP67		
Impact Protection	IK09		
Tamper	Supported		
Power	Voltage: DC 12V Current: Max. 600 mA		
Operating Temperature	-20°C ~ 50°C		
Operating Humidity	0% ~ 80%, non-condensing		
Dimensions (WxHxD, mm)	50 x 172 x 43.5		
Certificates	CE, FCC, KC, RoHS, REACH, WEEE, UL 294 * UL 294 is applied to only BEW2-OAP model.		

* DESFire EV2 cards are supported by having backward compatibility of DESFire EV1 cards. CSN and smart card functions are compatible with BioEntry W2.

System Configurations



Suprema Inc.

17F Parkview Tower, 248, Jeongjail-ro, Bundang-gu, Seongnam-si, Gyeonggi-do, 13554, Rep. of KOREA
 T +82 31 783 4502 F +82 31 783 4503 E sales_sys@supremainc.com www.supremainc.com

©2020 Suprema Inc. Suprema and identifying product names and numbers herein are registered trademarks of Suprema, Inc. All non-Suprema brands and product names are trademarks or registered trademarks of their respective companies. Product appearance, build status and/or specifications are subject to change without notice. [SUPREMA-AHL-BEW2-EN-REV08]